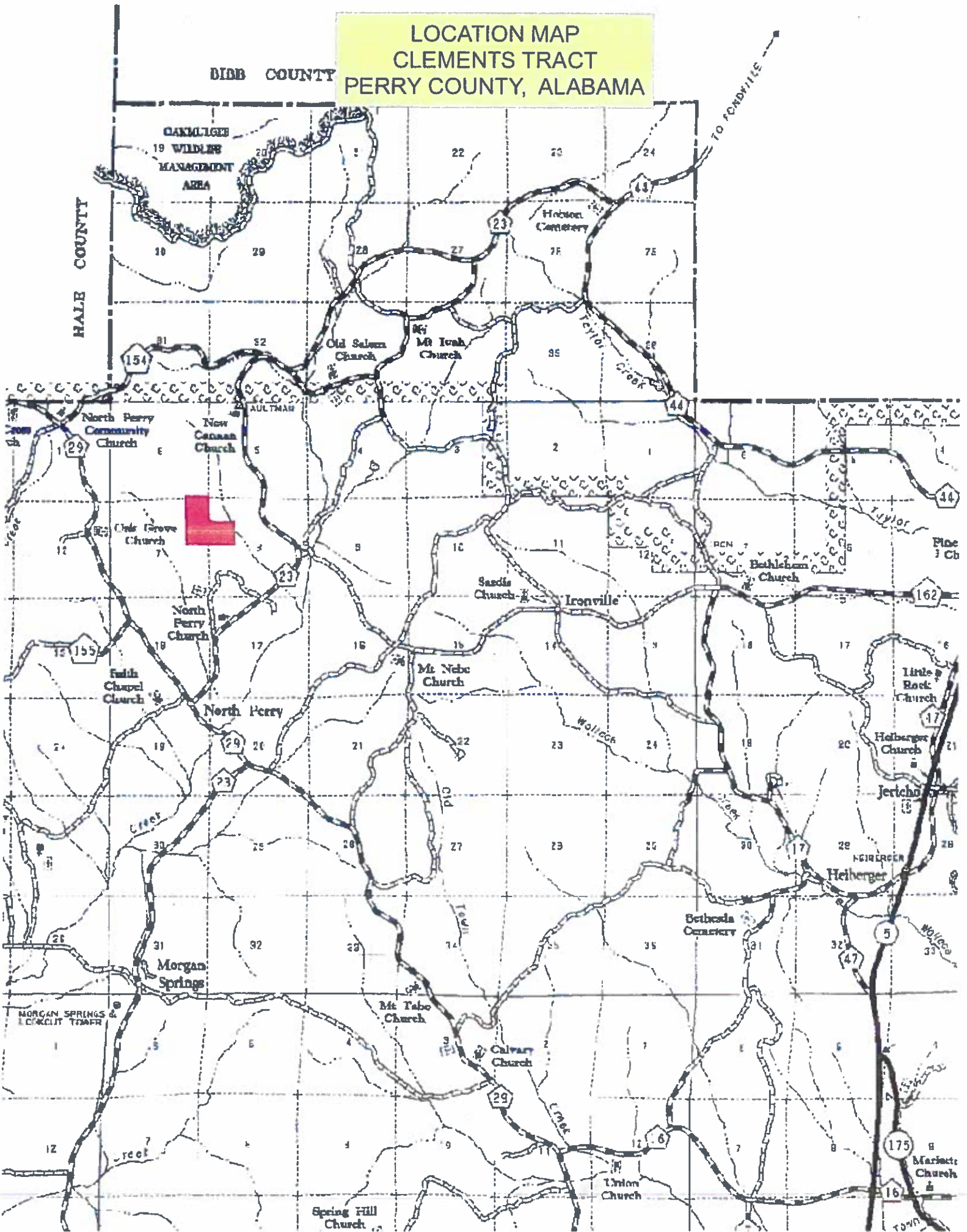
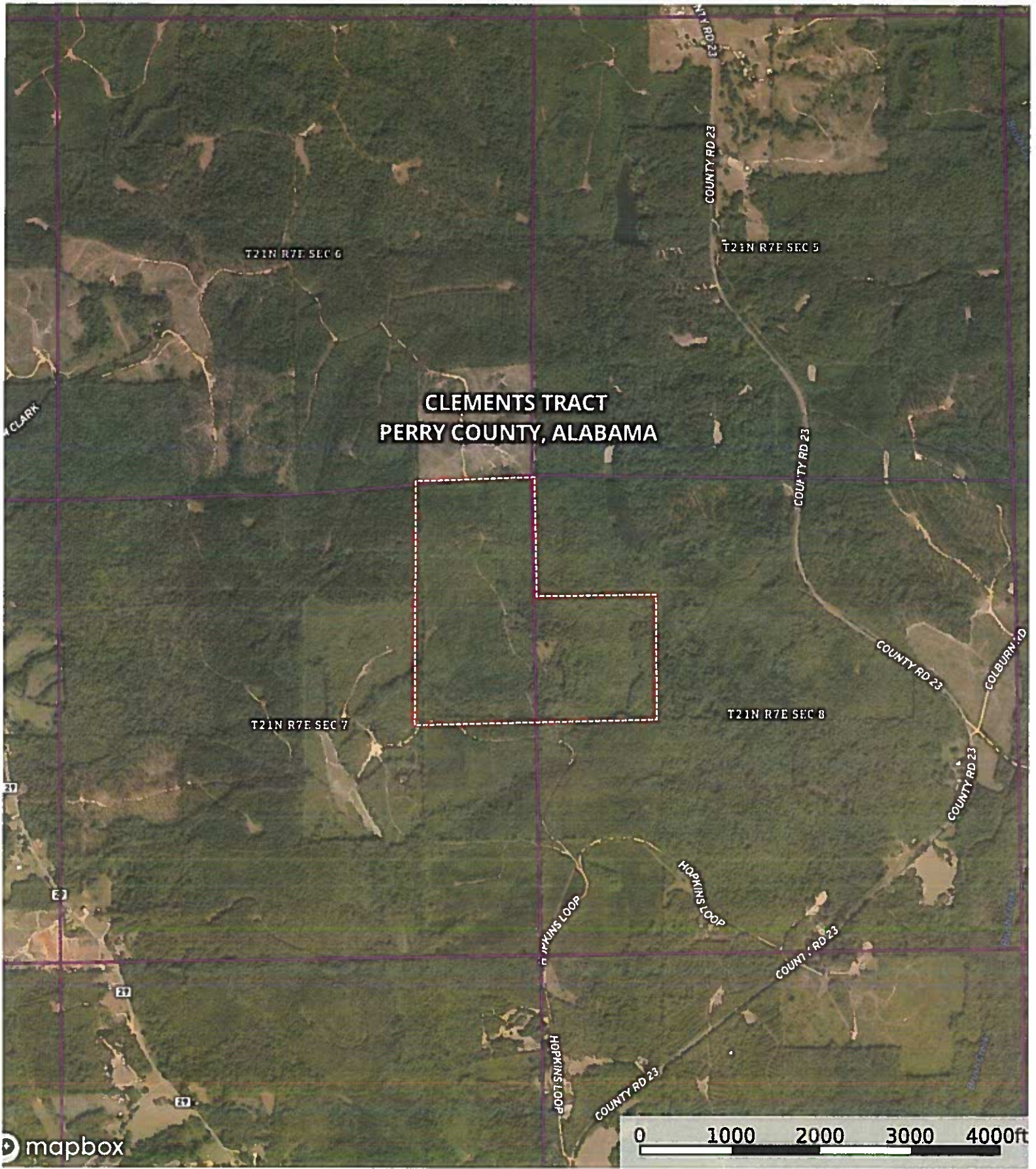
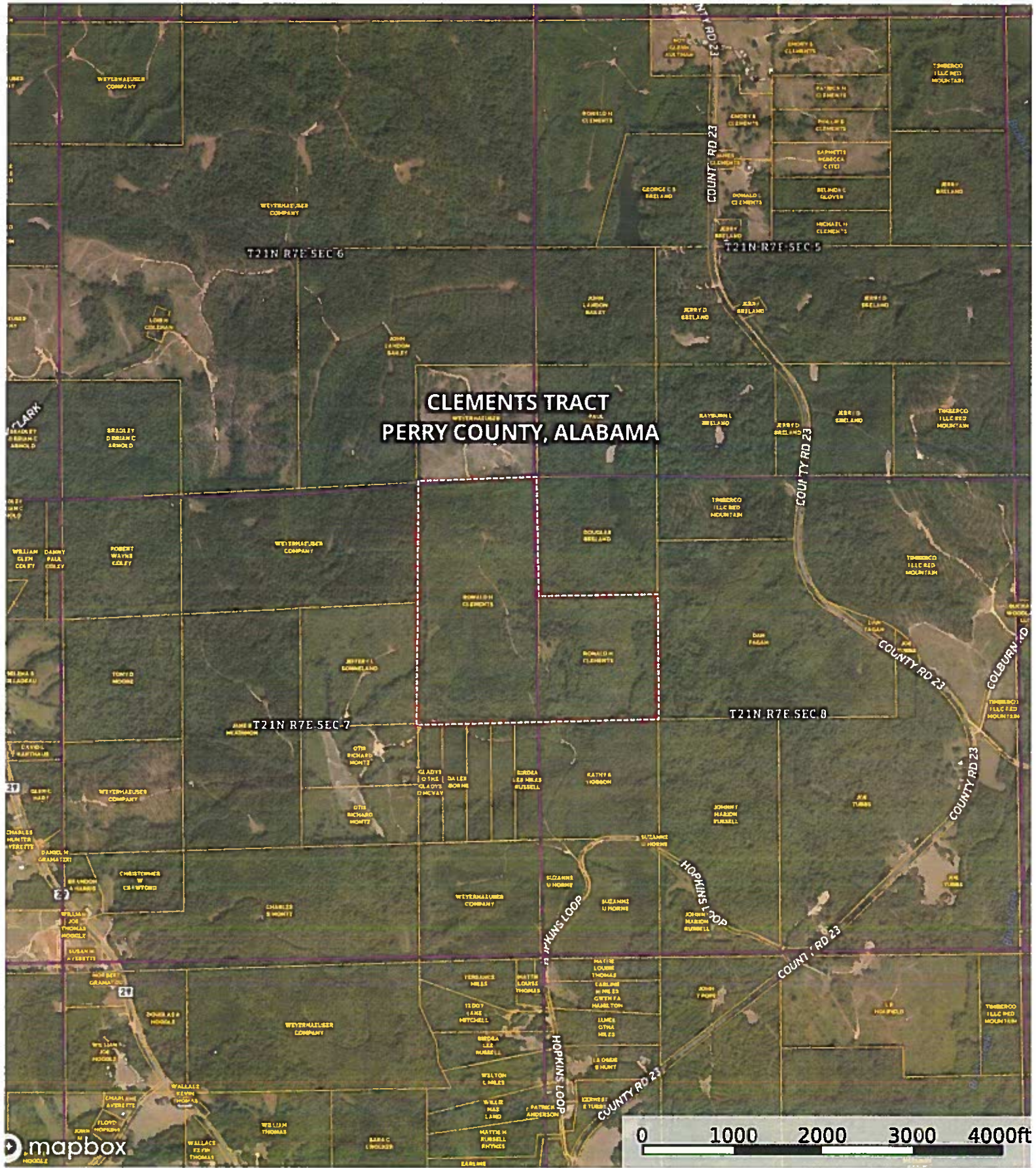


LOCATION MAP
CLEMENTS TRACT
PERRY COUNTY, ALABAMA

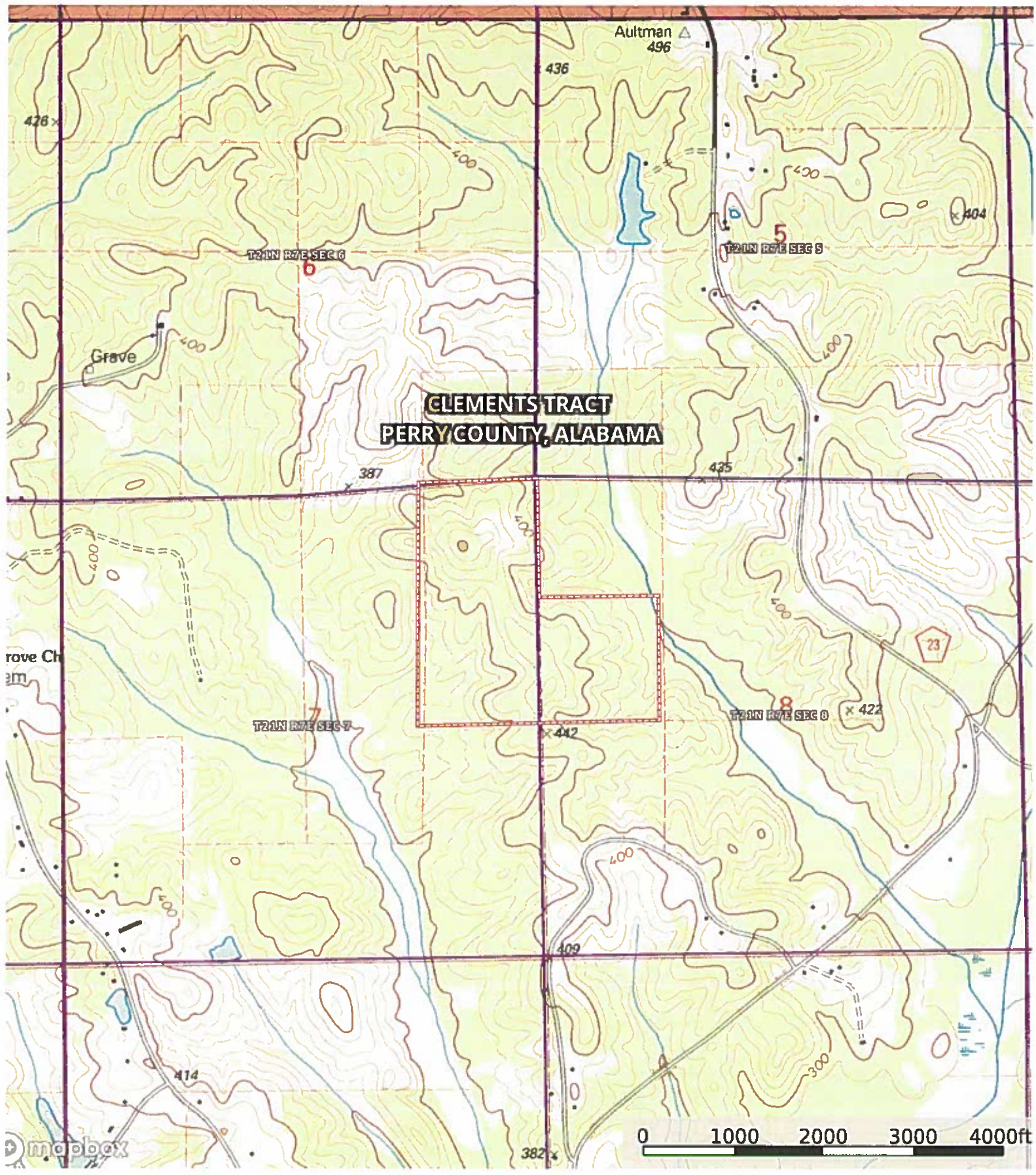




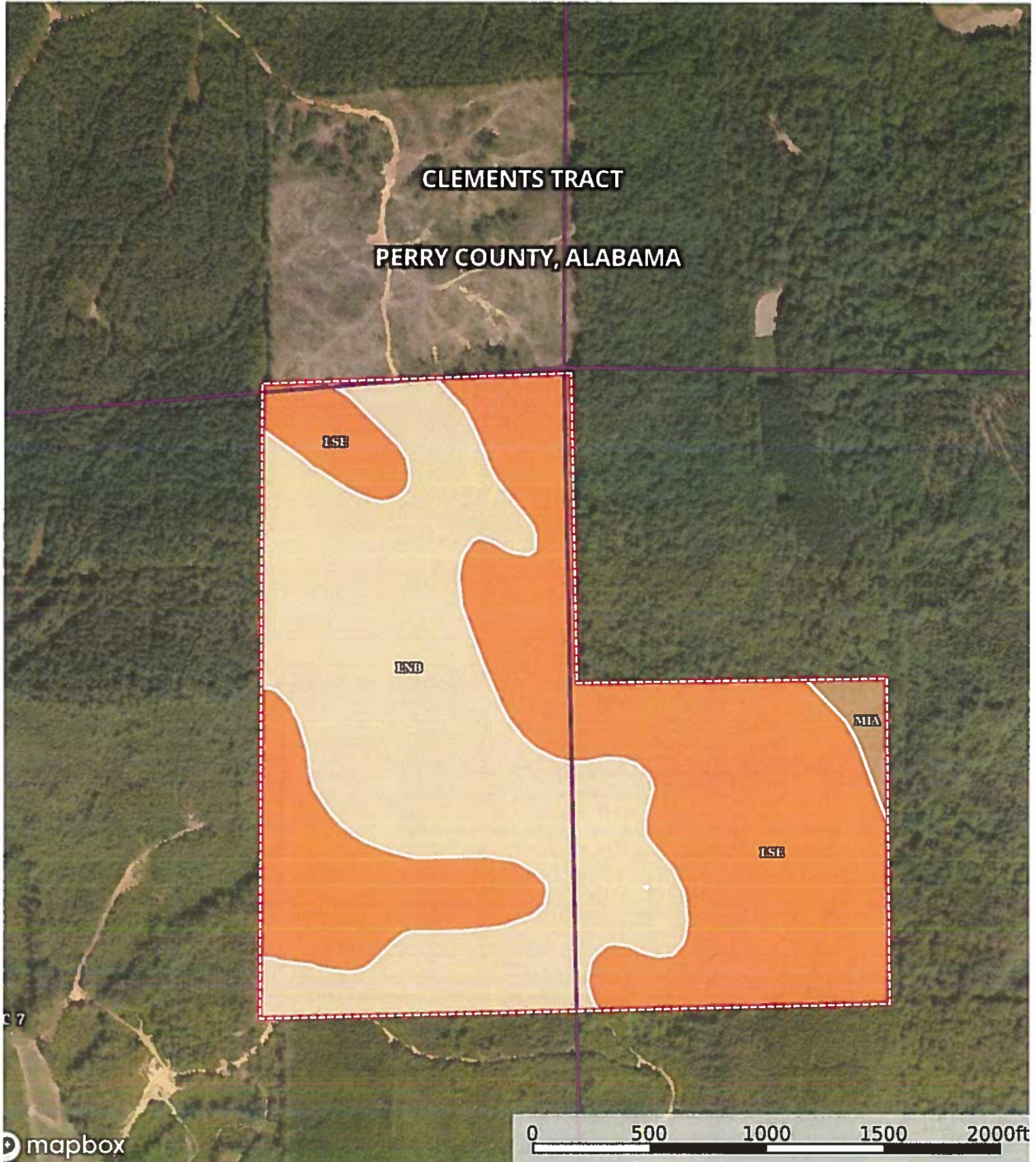
Boundary



Boundary



Boundary



Boundary

Boundary 126.09 ac

SOIL CODE	SOIL DESCRIPTION	ACRES	%	CPI	NCCPI	CAP
LsE	Luverne-Smithdale complex, 15 to 35 percent slopes	66.12	52.43	0	16	7e
LnB	Luverne sandy loam, 2 to 5 percent slopes	58.07	46.05	0	70	3e
MIA	Mantachie, Kinston and luka soils, 0 to 1 percent slopes, frequently flooded	1.9	1.51	0	60	5w
TOTALS		126.09(*)	100%	-	41.53	5.13

(*) Total acres may differ in the second decimal compared to the sum of each acreage soil. This is due to a round error because we only show the acres of each soil with two decimal.

Capability Legend

Increased Limitations and Hazards

Decreased Adaptability and Freedom of Choice Users

Land, Capability

	1	2	3	4	5	6	7	8
'Wild Life'	•	•	•	•	•	•	•	•
Forestry	•	•	•	•	•	•	•	
Limited	•	•	•	•	•	•	•	
Moderate	•	•	•	•	•	•		
Intense	•	•	•	•	•			
Limited	•	•	•	•				
Moderate	•	•	•					
Intense	•	•						
Very Intense	•							

Grazing Cultivation

(c) climatic limitations (e) susceptibility to erosion

(s) soil limitations within the rooting zone (w) excess of water